



DECEMBER 2012

NEWSLETTER

Founded in 1963
Affiliated with the American Orchid Society

In 1963, the Eastern Airlines Orchid Club was formed to foster good fellowship through the common love of orchids in all their forms and varieties: to share both the knowledge and techniques or culture and the mystery and beauty of the plants and flowers.

Visitors Always Welcome

SATURDAY, DECEMBER 15, 2012

HOLIDAY PARTY !!!

Florida International University, South Campus
Wertheim Conservatory, Next to the Greenhouse
Tamiami Trail, (S.W. 8th Street) and S.W. 112th Avenue

(All Meetings are held on the third Friday of each month at 7:30 p.m. unless otherwise noted)

PRESIDENT'S MESSAGE



I hope everyone had a great Thanksgiving with friends and family! We are now looking forward to the annual Holiday Party which is being held at Zoo Miami on December 15. We always have a large selection of good food and a chance to renew friendships. Members will have a nice array of plants from which to select their Holiday orchid.

Members are encouraged to bring in orchid centerpieces to decorate the tables and for judging. These should consist of fresh cut flowers or plants in a holiday theme.

See you at the auction!

Your President,



Diane

HOLIDAY PARTY

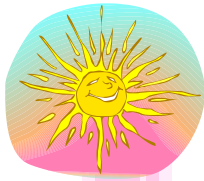
As you know, the party is being held at Zoo Miami. When you come down the entrance drive, bear to the right to the West parking lot. Continue to the chain link fence near the first building you see. The Pedestrian gate is located to the right of the handicapped parking area. Chris Rawls will be there from 6:00 PM until 6:30 PM to direct you. If we happen to be delayed getting into the park due to Zoo patrons who haven't left the park yet, we will make adjustments. However, don't count on it! Don't be late! There will be a cart available for those who really need a ride. We will all be leaving together because the security guard has to let us out.



AUCTION



I want to thank everyone for coming out and supporting our auction. We made \$1300.00. Thanks go to David Foster for being our auctioneer, to Danny and Barbara Lutz, Ralph Hernandez and Dean Powell for assisting in so many ways! Sue Ellen Powell kept the books. Chris Bernt was the cashier, and Nora Robbins made sure we had refreshments. Diana Gonzalez did the flyers. Without working together, we couldn't have done it. Thanks again to everyone!



SUNSHINE

No one has been reported as being ill or infirmed. If you know of someone, please contact Diane Dickhut so that a card can be sent from EALOC. 305-385-4007



NEWSLETTER

If you have any additions, deletions or corrections, please e-mail Chris Rawls at ccrawls@bellsouth.net or call him at 305-253-6715.

UPCOMING EVENTS



➤ EALOC CALENDAR

- December 9.....First Day of Hanukkah
- December 15.....EALOC Holiday Party
- December 21.....First Day of Winter
- December 25.....Christmas Day
- January 1.....New Year's Day
- January 18.....EALOC Meeting
- January 18.....EALOC Meeting

- January 26.....Tropical Winter Flowerland
- February 23.....Begonia Festival

➤ PALM HAMMOCKS EVENTS

- December 8.....Container Water Lily Gardening
- December 15.....Plant Gift Suggestions
- December 22.....Mrs. Santa Claus visits with her cookies

Every Thursday - 10 am - Garden Tour of What is New and Flowering

Wacky Wednesdays - 15% off plant purchases only, excluding discount card, orchids, specimen plants and hard goods

MEMBERSHIP



There were no new members this month. You are the key factor for recruiting. Ask someone today to attend the next club meeting.

EALOC FACEBOOK PAGE



A new Facebook page has been created for the purpose of sharing common interests of orchids. Feel free to peruse this page and your input is wanted and appreciated. Share your thoughts and knowledge for the benefit of everyone. Here's a way to socialize and get closer to each one another.

If you have ideas for improving the page, please contact Chris Rawls. This is a work in progress and your input will help to continuously refine and enhance this communication initiative.

Do a search for "Eastern Airlines Orchid Club" and visit it often.

IMPORTANT HOLIDAY PARTY INFORMATION

The Holiday Party is set for Saturday, December 15, 2012, at Zoo Miami, 12400 SW 152 Street, Miami, FL 33177

THIS IS A LOCKED FACILITY!!! WE ARE ABLE TO ENTER BETWEEN 6:00 AND 6:30 PM. NO ONE WILL BE ABLE TO ENTER AFTER 6:30 PM AND EVERYONE MUST LEAVE AT THE SAME TIME.

Festivities will begin at 6:30 pm. We plan to sit down to eat at 7:00 pm. The club will provide the appetizers, turkey, ham, beverages, and desserts. Members are asked to bring a covered side dish (with serving utensil) to serve 10-12 people. Don't forget the serving utensils as there are none available there for us to use.

Family and friends are welcome at \$5.00 each. Please pay Chris Bernt for your guest. If you have not signed up or been contacted by December 10, please call Barbara Lutz at 305-448-8057 to confirm your dish and number attending. RSVP's are required! Seating is limited to 55.

Don't forget your name badge. You'll need your number to receive your holiday plant. Set up and clean up "Elves" are needed. So, please call Barbara to volunteer.

➤ DIRECTIONS FROM NORTH POLE

Take the Florida Turnpike (821) South to the Homestead Extension. Take the Homestead Extension to Exit #16. Exit Turnpike, come down ramp to your right. You are close to the Zoo. Make a right off the exit and then make another right at 152 Street. You will then be going west on SW 152 Street (Coral Reef Drive). Move to the left lane and enter the Zoo at SW 124 Avenue to your left.

or

Take U.S. 1 South (South Dixie Highway) to 152 Street (Coral Reef Drive). Make a right

onto it. Proceed west for 3 miles. Enter Zoo on the left at SW 124 Avenue.

Upon entering the Zoo, go to the end of the entrance drive and turn right then left into the WEST parking lot. We will be entering a small pedestrian gate just to the right of the main entrance gate. A golf cart will be available to transport anyone who may have difficulty walking.

Barbara will have her cell phone on if you have any difficulties: 786-412-1034.

